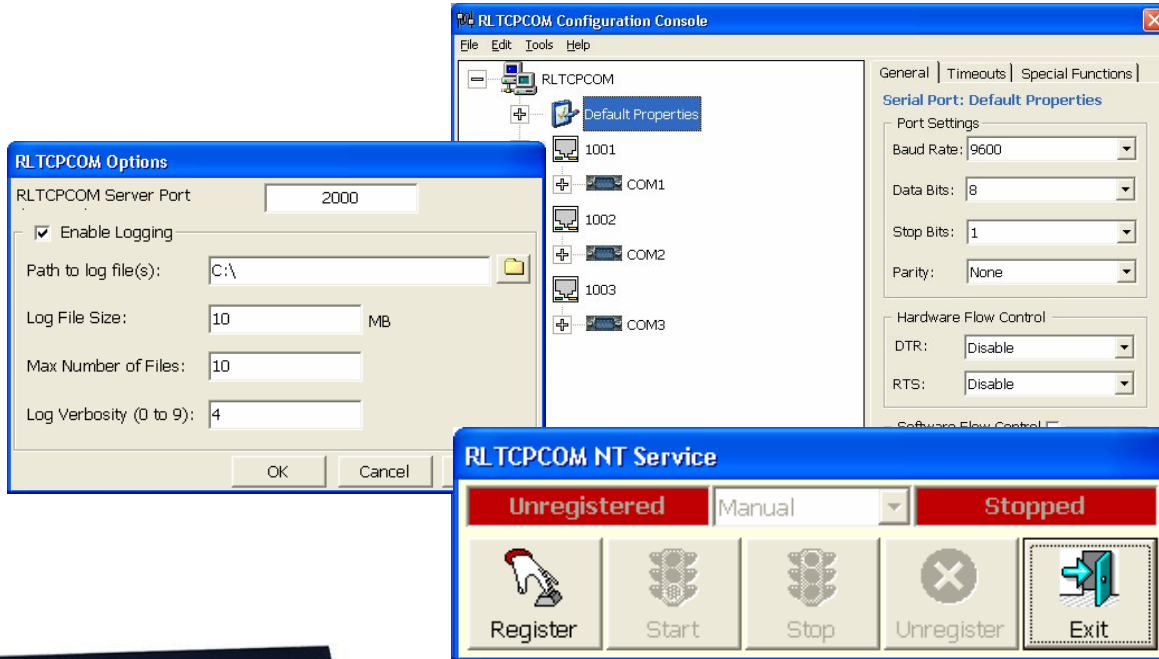




## Get your serial data when you need it and where you need it

ReLab Serial-TCP/IP server (RLTCP.COM) is a software-based solution that provides you with ability to share up to 255 serial port devices over the TCP/IP network. RLTCP.COM makes it possible for any serial port device that is connected to a COM port to be accessed from anywhere as if it were attached to a local workstation (over LAN or WAN).



RLTCP.COM can be used to pass serial data across the network over Telnet or the raw TCP connection protocols.

RLTCP.COM is an essential tool for managing serial devices such as IED's and PLC's across the network.

The Configuration Console is simple and friendly

- Create ports assignments
- Adjust serial protocol parameters
- Set service and logging options
- Select TCP or Tenet session
- Start or Stop the service

ReLab Serial to TCP/IP Server  
A robust & scalable solution for serial networks

# ReLab Serial to TCP/IP Server

A robust & scalable solution for serial network



Get your serial data when you need it  
and where you need it

## Scalable

- Up to 255 serial ports
- Up to 65535 TCP/IP ports
- Telnet or raw TCP connection protocols

## Performance

- RLTCPCOM Server has extremely high performance. Consumes almost unnoticeable CPU and RAM resources.

## Reliability

- RLTCPCOM Server has a proven record of running without interruptions, crashes, memory growth or other unpleasant effects. It will provide you with a reliable stream of serial data.

## Functionality

- Full control over serial port configuration (port settings, timeouts, special functions)
- Runs as NT Service
- Simple configuration
- On-line port configuration status

## Economics

- RLTCPCOM provides economical solution over your serial network— Having all those features , you can not make a mistake by choosing RLTCPCOM

You can download a free demo version from our web site at [www.relabsoft.com](http://www.relabsoft.com)

ReLab Software LLC [www.relabsoft.com](http://www.relabsoft.com) [www.clearcontrols.com](http://www.clearcontrols.com)